

3 YEARS
WARRANTY



VIDEO



12W + 12W

24W + 24W

36W + 36W

Shinny Pannello
LED PANEL LIGHT

specification

PRODUCT NAME :	SHINNY PANNELLO LED PANEL LIGHT
MODEL NO. :	PL28 12W+12W/24W+24W/36W+36W
SPECIFICATION :	AC220-240V,50-60Hz, 12W+12W/24W+24W/36W+36W
WORKING TEMP :	-20~50(°C)
POWER FACTOR :	>0.6
CRI(RA) :	>80
COLOR :	Shinny White
LIGHT SOURCE :	SMD
LUMEN :	80 LM/W
BEAM ANGLE :	120°
PRODUCT SIZE :	120*23mm/170*25mm/225*27mm
CUT OUT :	50-90mm/50-130mm/50-170mm
IP :	IP20
APPLICATION :	Home, Shop, Hotel..etc.
WARRANTY :	3 years
STANDARD :	CE

Color Temperature:

6500K+3000K / 6500K+Red / 6500K+Green / 6500K+Blue



NEXTLITE PRODUCTS



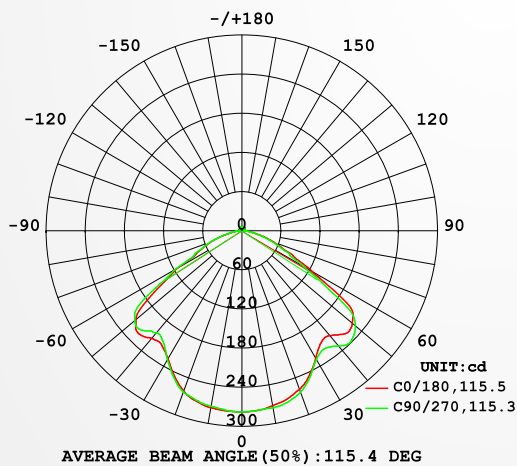


12W+12W LUMINAIRE PHOTOMETRIC TEST REPORT

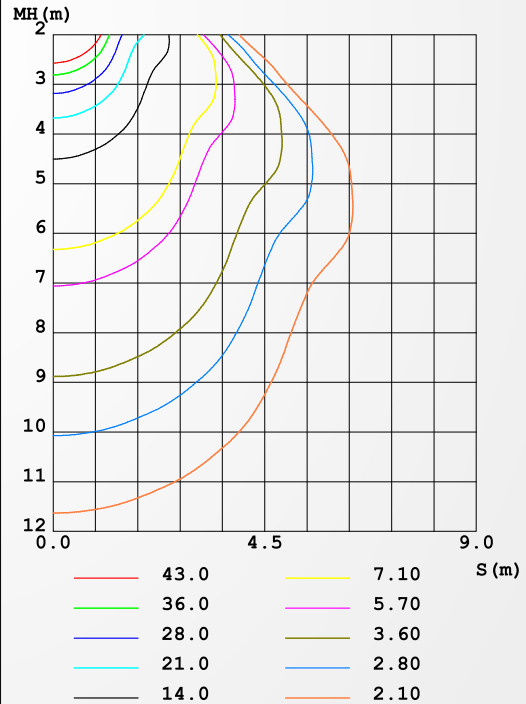
NAME: SHINNY PANNELLO LED PANEL LIGHT	TYPE:	WEIGHT:0.18KG
SPEC.: 12W+12W	DIM.:	SERIAL No.:
MFR.: NEXLEDS	SUR.:47	Shielding Angle:

DATA OF LAMP		PHOTOMETRIC DATA				Eff: 66.82 lm/W
MODEL	PL28 12W+12W	Imax (cd)	277.9	S/MH (C0/180)	1.22	
NOMINAL POWER (W)	12+12	LOR (%)	100.0	S/MH (C90/270)	1.22	
RATED VOLTAGE (V)	220	TOTAL FLUX (lm)	828.02	η UP, DN (C0-180)	2.0, 48.8	
NOMINAL FLUX (lm)	828.019	CIE CLASS	DIRECT	η UP, DN (C180-360)	1.6, 47.6	
LAMPS INSIDE	1	η up (%)	3.6	CIBSE SHR NOM	1.50	
TEST VOLTAGE (V)	220	η down (%)	96.4	CIBSE SHR MAX	1.55	

LUMINOUS INTENSITY DISTRIBUTION DIAGRAM



C0 PLANE ISOLUX DIAGRAM (UNIT:lx)



C Range: 0 - 360DEG
 C Interval: 22.5DEG
 Test Speed: MEDIUM
 Temperature: 28DEG
 Operators: JACK
 Test Date: 17 November 2022

γ Range: 0 - 180DEG
 γ Interval: 0.5DEG
 Test System: EVERFINE GO-2000B_V1 SYSTEM V2.0.407.13
 Humidity: 63.0%
 Test Distance: 11.565m [K=1.0000]
 Remarks:



JOIN US ON OUR
FACEBOOK PAGE +

NEXTLITE PRODUCTS

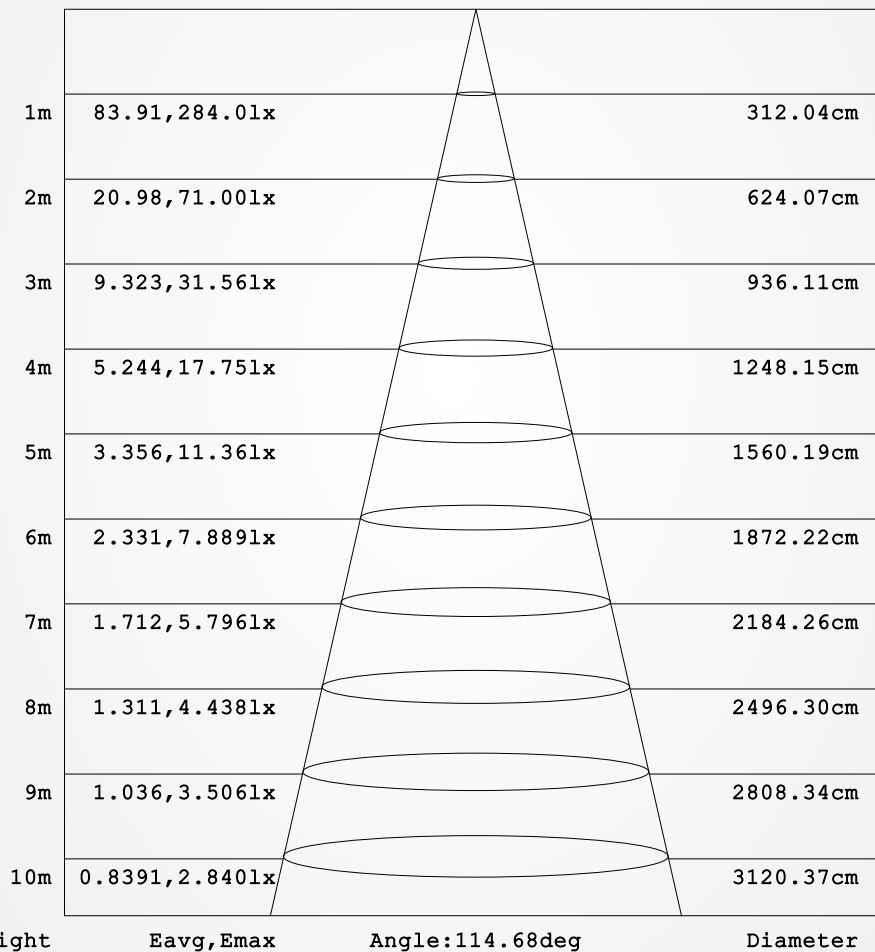


12W+12W

AAI FIGURE

NAME: SHINNY PANNELLO LED PANEL LIGHT	TYPE:	WEIGHT:0.18KG
SPEC.: 12W+12W	DIM.:	SERIAL No.:
MFR.: NEXLEDS	SUR.:47	Shielding Angle:

Flux out:649.5 lm



Note:The Curves indicate the illuminated area and the average illumination when the luminaire is at different distance.

C Range: 0 - 360DEG
C Interval: 22.5DEG
Test Speed: MEDIUM
Temperature:28DEG
Operators:JACK
Test Date:17 November 2022

γ Range: 0 - 180DEG
 γ Interval: 0.5DEG
Test System:EVERFINE GO-2000B_V1 SYSTEM V2.0.407.13
Humidity:63.0%
Test Distance:11.565m [K=1.0000]
Remarks:



JOIN US ON OUR
FACEBOOK PAGE +

NEXTLITE PRODUCTS

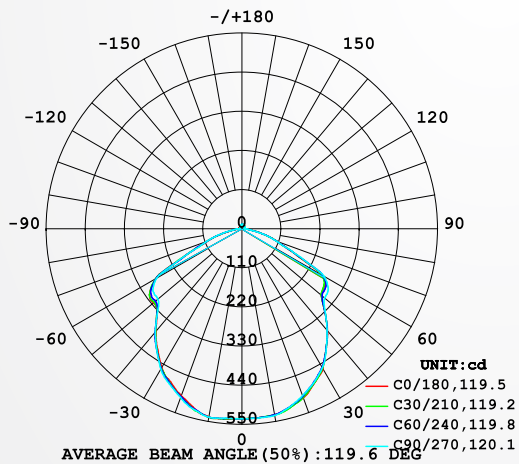


24W+24W LUMINAIRE PHOTOMETRIC TEST REPORT

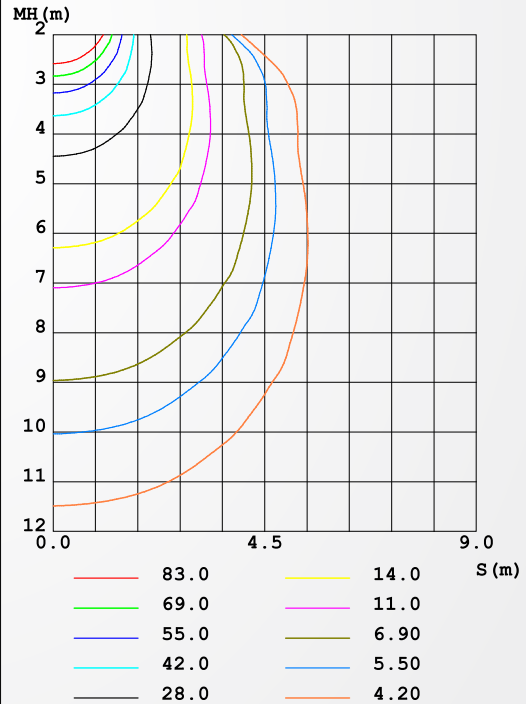
NAME: SHINNY PANNELLO LED PANEL LIGHT	TYPE:	WEIGHT:0.23KG
SPEC.: 24W+24W	DIM.:	SERIAL No.:
MFR.: NEXLEDS	SUR.:69	Shielding Angle:

DATA OF LAMP		PHOTOMETRIC DATA				Eff: 66.18 lm/W
MODEL	PL28 24W+24W	Imax (cd)	539.3	S/MH (C0/180)	1.25	
NOMINAL POWER (W)	24+24	LOR (%)	100.0	S/MH (C90/270)	1.25	
RATED VOLTAGE (V)	220	TOTAL FLUX (lm)	1518.4	η UP, DN (C0-180)	2.0, 47.9	
NOMINAL FLUX (lm)	1518.41	CIE CLASS	DIRECT	η UP, DN (C180-360)	1.6, 48.5	
LAMPS INSIDE	1	η up (%)	3.6	CIBSE SHR NOM	1.25	
TEST VOLTAGE (V)	220	η down (%)	96.4	CIBSE SHR MAX	1.35	

LUMINOUS INTENSITY DISTRIBUTION DIAGRAM



C0 PLANE ISOLUX DIAGRAM (UNIT:lx)



C Range: 0 - 360DEG
C Interval: 15.0DEG
Test Speed: MEDIUM
Temperature: 28DEG
Operators: JACK
Test Date: 2022-11-16

γ Range: 0 - 180DEG
 γ Interval: 0.5DEG
Test System: EVERFINE GO-2000B_V1 SYSTEM V2.0.407.13
Humidity: 63.0%
Test Distance: 11.565m [K=1.0000]
Remarks:



JOIN US ON OUR FACEBOOK PAGE +

NEXTLITE PRODUCTS

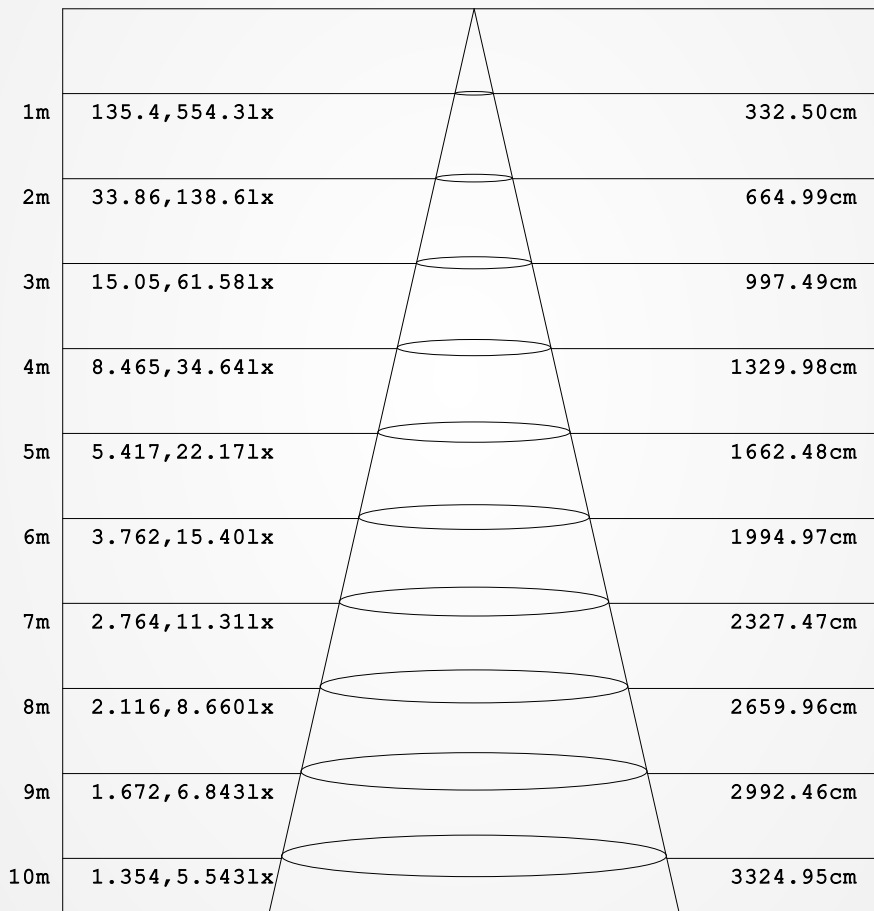


24W+24W

AAI FIGURE

NAME: SHINNY PANNELLO LED PANEL LIGHT	TYPE:	WEIGHT:0.23KG
SPEC.: 24W+24W	DIM.:	SERIAL No.:
MFR.: NEXLEDS	SUR.: 69	Shielding Angle:

Flux out:1179 lm



Height Eavg, Emax Angle:117.95deg Diameter

Note:The Curves indicate the illuminated area and the average illumination when the luminaire is at different distance.

C Range: 0 - 360DEG
C Interval: 15.0DEG
Test Speed: MEDIUM
Temperature:28DEG
Operators:JACK
Test Date:2022-11-16

γ Range: 0 - 180DEG
γ Interval: 0.5DEG
Test System:EVERFINE GO-2000B_V1 SYSTEM V2.0.407.13
Humidity:63.0%
Test Distance:11.565m [K=1.0000]
Remarks:



JOIN US ON OUR
FACEBOOK PAGE +

NEXTLITE PRODUCTS

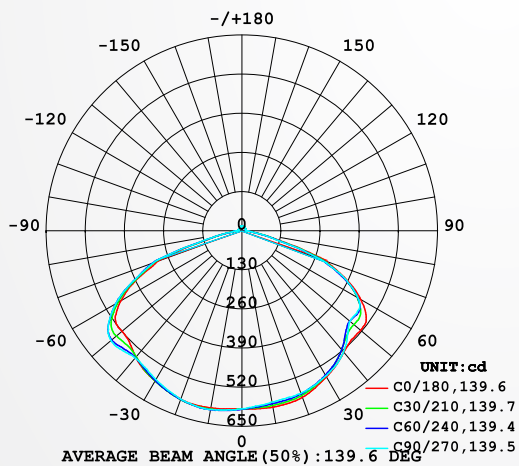


36W+36W LUMINAIRE PHOTOMETRIC TEST REPORT

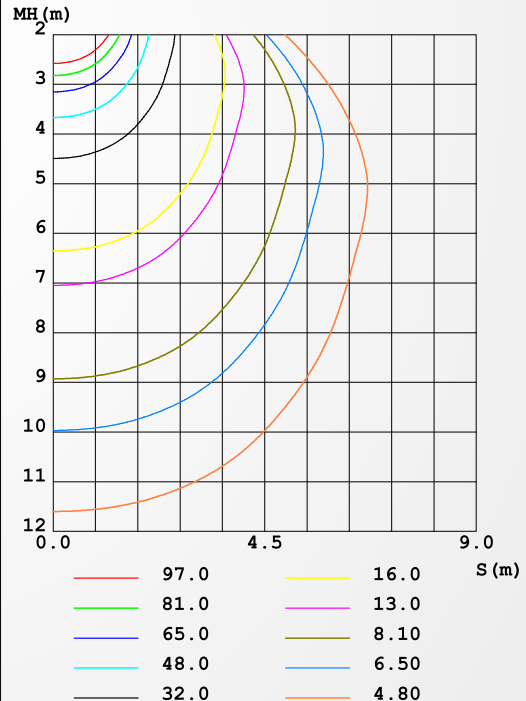
NAME: SHINNY PANNELLO LED PANEL LIGHT	TYPE:	WEIGHT:0.43KG
SPEC.: 36W+36W	DIM.:	SERIAL No.:
MFR.: NEXLEDS	SUR.:105	Shielding Angle:

DATA OF LAMP		PHOTOMETRIC DATA				Eff: 80.01 lm/W
MODEL	PL28 36W+36W	Imax (cd)	604.6	S/MH (C0/180)	1.46	
NOMINAL POWER (W)	36+36	LOR (%)	100.0	S/MH (C90/270)	1.45	
RATED VOLTAGE (V)	220	TOTAL FLUX (lm)	2354.5	η UP, DN (C0-180)	1.9, 46.9	
NOMINAL FLUX (lm)	2354.47	CIE CLASS	DIRECT	η UP, DN (C180-360)	1.6, 49.5	
LAMPS INSIDE	1	η up (%)	3.6	CIBSE SHR NOM	1.50	
TEST VOLTAGE (V)	220	η down (%)	96.4	CIBSE SHR MAX	1.55	

LUMINOUS INTENSITY DISTRIBUTION DIAGRAM



C0 PLANE ISOLUX DIAGRAM (UNIT:lx)



C Range: 0 - 360DEG
C Interval: 15.0DEG
Test Speed: MEDIUM
Temperature: 28DEG
Operators: JACK
Test Date: 2022-11-16

γ Range: 0 - 180DEG
 γ Interval: 0.5DEG
Test System: EVERFINE GO-2000B_V1 SYSTEM V2.0.407.13
Humidity: 63.0%
Test Distance: 11.565m [K=1.0000]
Remarks:



JOIN US ON OUR
FACEBOOK PAGE +

NEXTLITE PRODUCTS

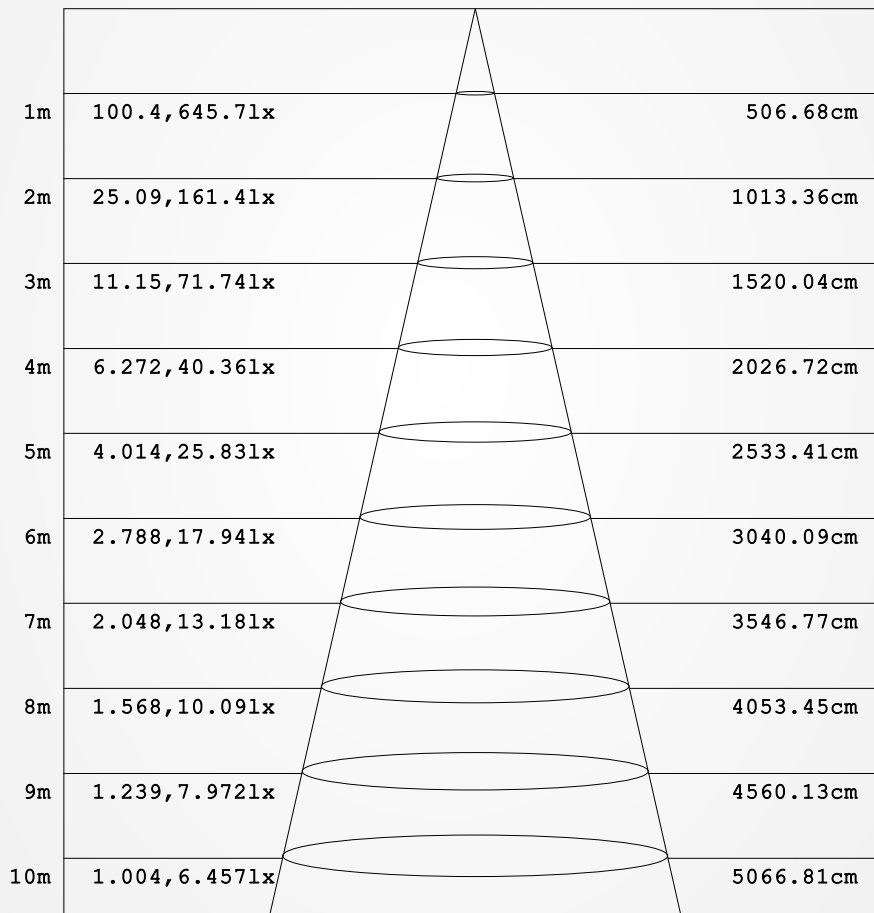


36W+36W

AAI FIGURE

NAME: SHINNY PANNELLO LED PANEL LIGHT	TYPE:	WEIGHT:0.43KG
SPEC.: 36W+36W	DIM.:	SERIAL No.:
MFR.: NEXLEDS	SUR.:105	Shielding Angle:

Flux out:2032 lm



Height Eavg, Emax Angle:136.92deg Diameter

Note: The Curves indicate the illuminated area and the average illumination when the luminaire is at different distance.

C Range: 0 - 360DEG
C Interval: 15.0DEG
Test Speed: MEDIUM
Temperature: 28DEG
Operators: JACK
Test Date: 2022-11-16

γ Range: 0 - 180DEG
γ Interval: 0.5DEG
Test System: EVERFINE GO-2000B_V1 SYSTEM V2.0.407.13
Humidity: 63.0%
Test Distance: 11.565m [K=1.0000]
Remarks:



JOIN US ON OUR
FACEBOOK PAGE +

NEXTLITE PRODUCTS