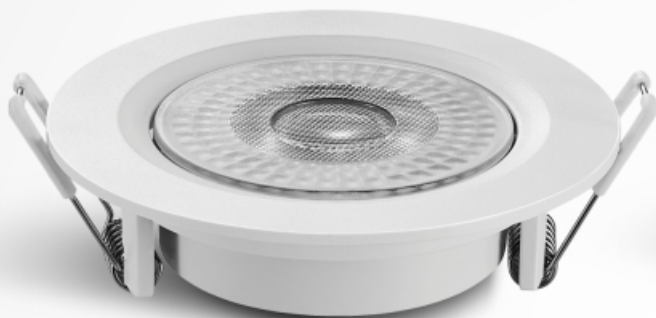


**3 YEARS**  
WARRANTY



VIDEO



**LED SPOT LIGHT**

**4W**

**specification**

Product Name :	LED SPOT LIGHT
Model NO. :	NX-CS-4W-ROUND / NX-CS-4W-SQ
Specification :	AC85-265V,50Hz ,36mA,4W
Working Temp :	-20~45(°C)
Power Factor :	0.5
CRI(ra) :	80
Body Color :	White
Light Source :	SMD 2835
Lumen :	315 lm
Life Time :	30000 hrs
Beam Angle :	38°
Adjustable Angle :	30°
Product Size :	Φ90*25mm / 90*90*25mm
Cut Out:	Φ75*75mm / 75*75mm
IP :	IP20
Application :	Home, Shop, Hotel...etc
Warranty :	3 years

**Color Temperature:**

**3000K / 4000K / 6500K**



# 4W

## LUMINAIRE PHOTOMETRIC TEST REPORT

### Luminaire Property

Luminaire Manufacturer: NEXLEDS  
Luminaire Category:  
Current: 0.034 A  
Power Factor: 0.476

Report No.: NX-CS-4W-ROUND  
Voltage: 217.8 V  
Power: 3.58 W

### Photometric Results

CIE Class: Direct  
Measurement Flux: 312.7 lm  
Downward Ratio: 95%  
Horizontal Diffuse Angle(25%,50%): H64.9,H50  
Vertical Diffuse Angle(25%,50%): V61.4,V46.9  
Luminaire Efficacy Rating (LER): 87.40  
Max. Intensity: 365.5 cd  
S/MH(C0/C180): 0.81

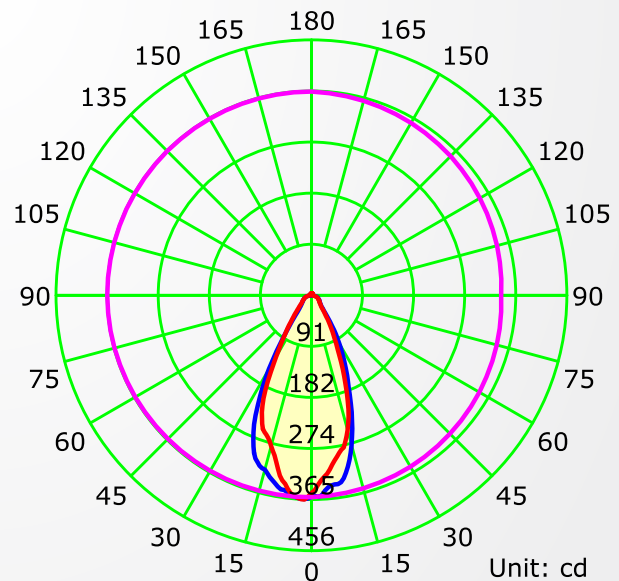
Total Rated Lamp Lumens: 312.7 lm  
Efficiency: 100%  
Upward Ratio: 5%

Central Intensity: 360.27 cd  
Pos of Max. Intensity: H270 V2  
S/MH(C90/C270): 0.75

Picture Of Luminaire



Luminous Intensity Distribution Curve



Average Diffuse Angle(50%): 48.2°

— C0-C180 — C90-C270 — G2

C Plane (°):0.0-360.0: 90.0  
Test Lab:  
Test Type: TYPE C  
Temperature: 24  
Operator:

Gamma Plane (°):0.0-180.0:1.0  
Test Device: GPM-1600  
Distance: 9.669 m  
Humidity: 70  
Inspector:



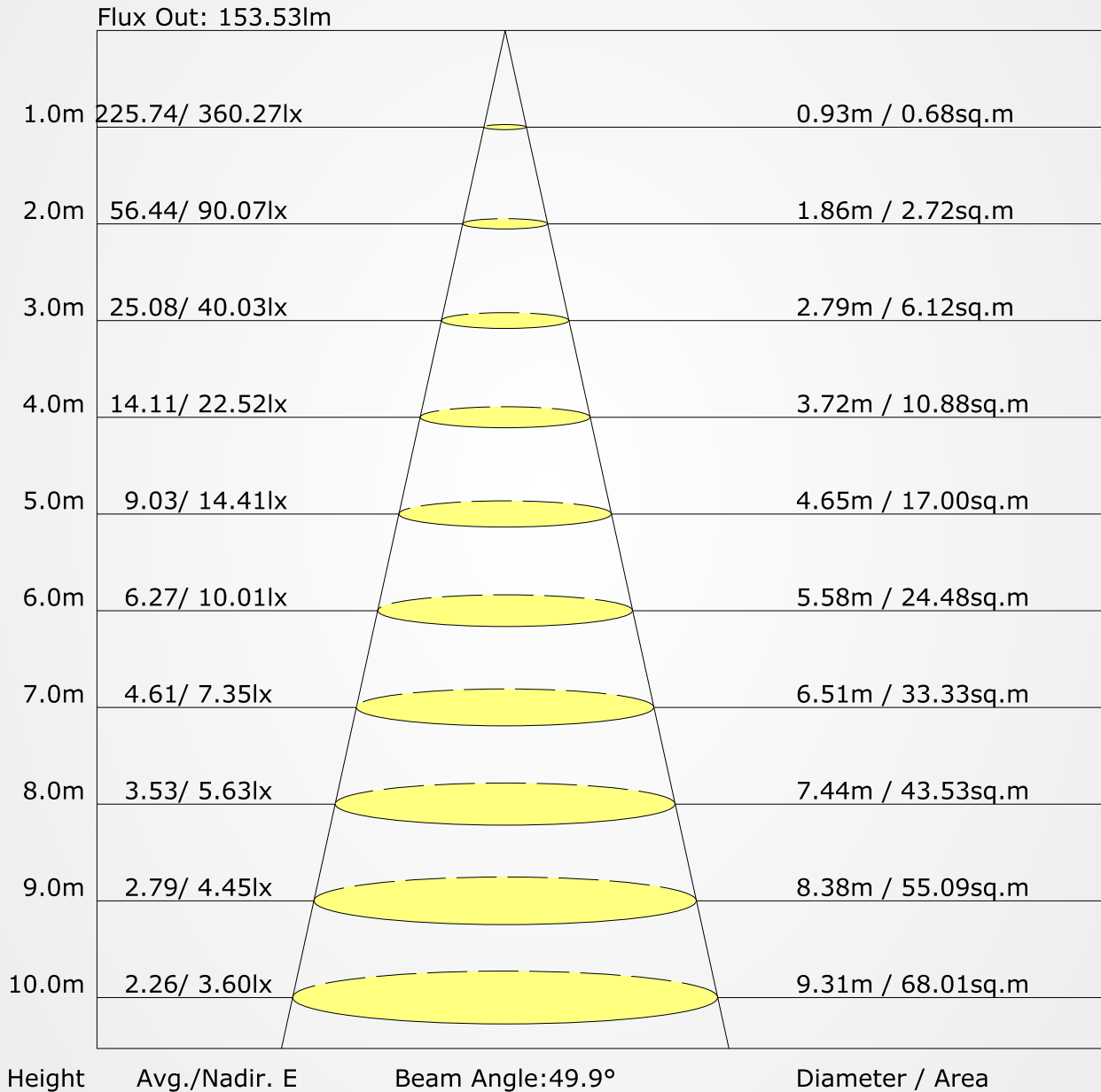
JOIN US ON OUR  
FACEBOOK PAGE +

NEXTLITE PRODUCTS



# 4W

## THE AVERAGE ILLUMINANCE EFFECTIVE FIGURE



C Plane (°): 0.0-360.0: 90.0  
 Test Lab:  
 Test Type: TYPE C  
 Temperature: 24  
 Operator:

Gamma Plane (°): 0.0-180.0: 1.0  
 Test Device: GPM-1600  
 Distance: 9.669 m  
 Humidity: 70  
 Inspector:



JOIN US ON OUR  
FACEBOOK PAGE +

NEXTLITE PRODUCTS